

Reykjavík, with its long time 'cool' reputation and the destination of choice for a cognoscente including Jeremy Clarkson, Eric Clapton, Jamie Oliver and Reese Witherspoon, is now on the way to becoming 'chilled and sparkling' with stylish hotels, modish design and cutting edge everything.

With a milder climate than other cities on the same latitude (even in winter it can be warmer than Vienna or New York), the weekend nightlife spills affably out on to the streets. The seafood is out of this world (everything from shark to salmon); the people just delightful and half of them drop dead gorgeous. Even the nation's First Lady is a stunner.

And on Reykjavík's doorstep are wild and romantic places with narrow fjords, deep ravines, vast glaciers with jumbles of moraine, dormant volcanoes, thunderous waterfalls and spouting geysers. If God had designed a theme park this would surely have

LEIFUR EIRÍKSSON HÓTEL

Opposite the Hallgríms Church, this small family run hotel prides itself on fulfilling its promise of personal service. All 47 rooms have been completely refurbished, are simply and pleasantly furnished with private WC/shower, satellite TV, radio and telephone.

- Close to the city centre • Friendly personal service • 24-hour light meal beverage cafeteria



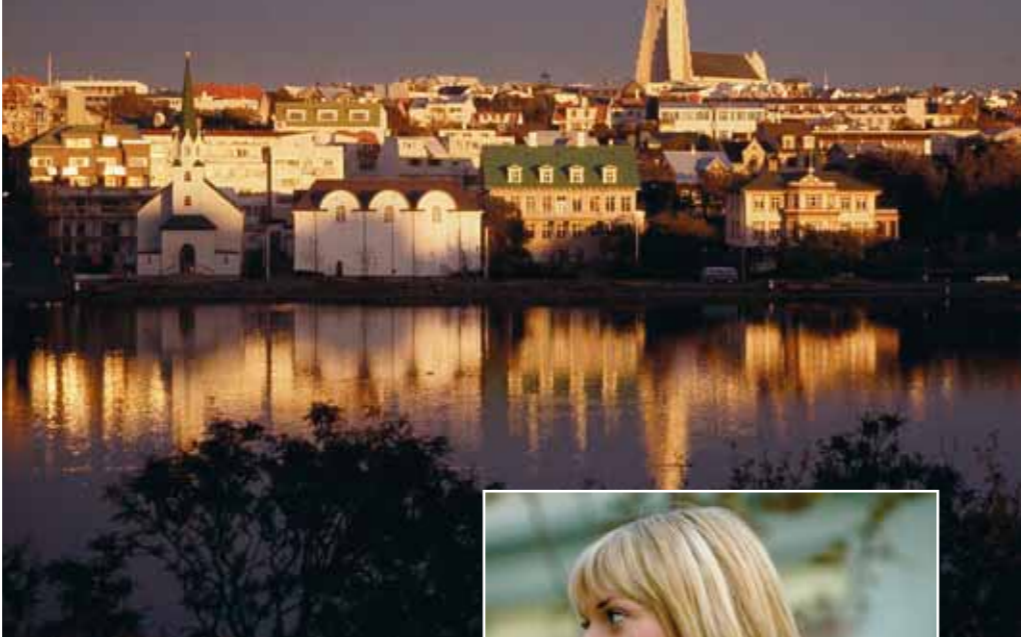
HÓTEL REYKJAVÍK

A modern, centrally located, standard class hotel with a pleasant informal atmosphere. All 78 rooms have private WC and shower/bath, telephone, radio, mini-bar and satellite TV.

- Central location • A la carte restaurant • Café • Lounge bar



A Brief Encounter with
Reykjavík



GRAND HOTEL REYKJAVÍK



Recently extended and renovated, the Grand is the perfect union between quiet surroundings and proximity to the city centre (about a 20-minute walk). All 209 rooms in the new tower block (where our room allocation is), are particularly spacious with either twin, queen or king sized beds and private WC/bath tub/shower with heated tile floors, radio, telephone, satellite TV, hair dryer and mini-bar.

Prices in £ per person

A BRIEF ENCOUNTER REYKJAVÍK AA3001

DATES	Leifur Eiriksson				Reykjavik				Grand				Centrum			
	TW	XN	S	XN	TW	XN	S	XN	TW	XN	S	XN	TW	XN	S	XN
OCT	440	40	490	60	455	45	540	73	480	49	595	89	515	65	620	99
1 NOV - 14 DEC	440	40	490	60	435	35	495	59	455	45	550	75	490	55	580	85
3 JAN - 28 MAR	425	35	475	55	435	35	495	59	455	45	550	75	490	55	580	85
APR	440	40	490	60	455	45	540	73	480	49	595	89	515	65	620	99

Prices include return scheduled flights from Heathrow, Gatwick, Glasgow* or Manchester* to Reykjavik
 • All airport departure taxes and passenger service charges • Pay on board cabin service • 3 nights accommodation in twin room(s) with private WC/shower • 3 breakfasts • Airport/Hotel arrival and departure transfers • Departure transfer via Blue Lagoon supplement £25 *Flight schedule may dictate amended itinerary

WHAT YOU SEE IS WHAT YOU GET

Our prices are based on generally available fares rather than never available ones so loved by the mass market. We don't have supplements, conditions or add-ons. The only surprise we'll ever give you is, if you book early and want to pay up front, then we may be able to shave up to £30 or more off them. Otherwise what you see is what you get.

THE CENTRUM HÓTEL

Stylish modern hotel inside with an exterior sympathetically in keeping with its surrounding clapboard buildings.

Bang in the centre of town but in a quiet enclave (more than useful on a Friday or Saturday night). Close to restaurants and shops. All 89 rooms are furnished and fitted in a Scandinavian minimalist but warm style and have private WC/shower, radio, TV, telephone.



PRE-BOOKABLE EXCURSIONS

REYKJAVÍK SIGHTSEEING

An ideal orientation to the capital including the little fishing village of Hafnarfjörður. Visit the cosmic looking Perlan nestling on a hill overlooking the city; continue to Hafnarfjörður via the Presidential Residence and the fish market; then to Hotoi, the Lutheran Cathedral and Hallgrim's Church. Hotel pick-up at 8.30 am for 2½ hours. **£35 per person**



GOLDEN CIRCLE CLASSIC



Available all year round and an all-day scenic extravaganza that bombards the senses. First stop the landscapes south of Lake Þingvallavatn before the National Park Þingvellir. From there continue to Gullfoss, the Golden Waterfall, with its foaming, thundering waters invariably over-arched with a rainbow. Continue to the Geysir area with its spouting water geysers and bubbling mud pots with time for lunch (payable locally). Return to Reykjavík via the cathedral at Skálholt, the extraordinary crater Kerið and the greenhouse community Hveragerði. Hotel pick-up at 8.00 am for 8 hours. **£65 per person**

GOLDEN CIRCLE SUPER JEEP CLASSIC



The white-knuckle ride of all time - a whole day tour following the classic Golden Circle (see panel above) route of Gullfoss, Geysir, Þingvellir and the Kerið crater in a specially equipped Icelandic Super Jeep. Your giant SUV reaches the parts other vehicles don't - the ultimate boys toy day out. Every view from one is that little bit more special - every journey that little bit more exciting. **£159 per person**

SOUTH COAST & ÞÓRSMÖRK

Iceland's Southern shore is an exquisite contrast between the hay meadows lying back from the shoreline, the backdrop of the Hekla volcano and the Mýrdalsjökull glacier; black sand beaches fringed with white foaming sea and the plunge waterfalls Seljandfoss and Skogafoss. The star attraction here is Þórsmörk where melt waters converge in the Málkjarflöt river which empties black volcanic sand on the beaches by Skogar. A protected nature reserve surrounded on 3 sides by glaciers and mountains, the torrenting streams make for adventurous crossings amongst the carpet of dwarf birch covering the ground. In the event of weather conditions restricting access, your route will be to Vik and Skogafoss. Hotel pick up at 08:30 for 10 hrs **£99 per person**

BLUE LAGOON AND KEFLAVÍK TRANSFER

If you want some time for last minute shopping this is a short form of our other Blue Lagoon excursion leaving out the Reykjanes Peninsula, so you need not check out of your hotel until midmorning. An ideal way to make the most of your last few hours in Reykjavík. Hotel pick-up at 10.30 am leaving the Lagoon at 2 pm for your flight back to the UK. Entrance to the Blue Lagoon payable locally. **£35 per person**



BLACK SAND BEACHES & MÝRDALSJÖKULL GLACIER

Iceland's Southern shore is an exquisite contrast between the hay meadows lying back from the shoreline, the backdrop of the Hekla volcano and the Mýrdalsjökull glacier; black sand beaches fringed with white foaming sea and the plunge waterfalls Seljandfoss and Skogafoss. Your day takes in all these as well as the bird cliffs alongside Vik (trivia note: vik is old Norse for bay, hence the etymology of Viking-people of the bay) and a hardcore drive up on the Mýrdalsjökull glacier on which you can snowmobile(optional and payable locally). Return via Hveragerði, the greenhouse village heated geothermally, back to Reykjavik. **£169 per person**

NORTHERN LIGHTS

Climb aboard for an evening hunt for the beautiful auroras known as the Northern Lights. Sometimes white, wispy and elusive and at others rainbow coloured, swirling and dramatic. The Norwegian, who first gave an explanation as to how they came about was driven mad (literally) by them: if you are lucky enough to catch a sighting your reaction may be a touch more muted! Hotel pick-up at 19.30 for 3/5 hours. **£45 per person. By Super Jeep £75 per person**



BLUE LAGOON, GULLFOSS & GEYSIR

A full day excursion beginning with the Blue Lagoon whose warm, turquoise blue waters lie amongst the black rocks of a lava field. From here you travel to Þingvellir where the early Viking settlers decided to stop raping and pillaging and set up a parliament instead. And then on to Gullfoss, in winter a giant mass of frozen stalagmites and stalactites overflowing with foaming water, before arriving at the famous Geysir area. Return to Reykjavik. Hotel pick-up at 8.30 for 10 hours. Entrance to Blue Lagoon payable locally. **£85 per person**



SUPER JEEP LOBSTER FEST

Iceland's lava fields are so surreal they seem from another world but when illuminated by the blues and greens of the Northern Lights, they take your breath away. Negotiating the tricky mountain tracks from the comfort of a luxury SuperJeep (a specially converted version of the world's largest SUV, complete with four-foot wheels and deflatable tyres for gliding across the ice), is the way to experience them in true style. Leave Reykjavik just as the sun begins to set, and drive under the stars down to the fishing village of Fjörubordid and round off the evening with a platter of freshly caught lobster in butter and garlic. Hotel pick-up at 6.30/7.00. **£199 per person**



EXCURSIONS LIKE NO OTHERS

As well as the excursions showcased here we have others ranging from horse riding to glacier snowmobiling; caving amongst icy stalactites to floating amongst icebergs. These are all featured on our website www.scantours.co.uk.

